

Numéro Du Style	<b>5T266</b>	
Collection	<b>Kindred</b>	
Type De Produit	<b>Dalles De Moquette</b>	
Construction	<b>Standard</b>	<b>Data + Performance</b>
Type De Fabrication	<b>ISO 2424</b>	<b>tufted 1/10"   39.4 per 10cm</b>
Construction	<b>ISO 2424</b>	<b>Tufté Structuré Bouclé à Motif</b>
Méthode De Coloration	<b>EN 994</b>	<b>100% Solution Teinte</b>
Dimensions Du Produit	<b>EN 994</b>	<b>50 cm x 50 cm   20 tiles (5 m²) per box</b>
Sous-couche Primaire	<b>ISO 2424</b>	<b>Pet Non-Woven</b>
Sous-couche Secondaire	<b>ISO 2424</b>	<b>Taskworx® Tile   Bitume Modifié Par Polymère</b>
Fibre	<b>ISO 2424</b>	<b>Ecosolution Q® Polyamide 6</b>
Épaisseur Du Velours	<b>ISO 1765</b>	<b>6.0 mm</b>
Épaisseur Du Velours Fini	<b>ISO 1766</b>	<b>2.7 mm</b>
Poids Total	<b>ISO 8543</b>	<b>4221 g/m²</b>
Poids Tufté	<b>ISO 2424</b>	<b>644 g/m²</b>
Poids Du Velours Utile	<b>ISO 8543</b>	<b>325 g/m²</b>
Densité Du Velours	<b>ISO 8543</b>	<b>0.122 g/m³</b>
Contenu Recyclé Total		<b>49% (pre-consumer 49%   post-consumer 0%)</b>

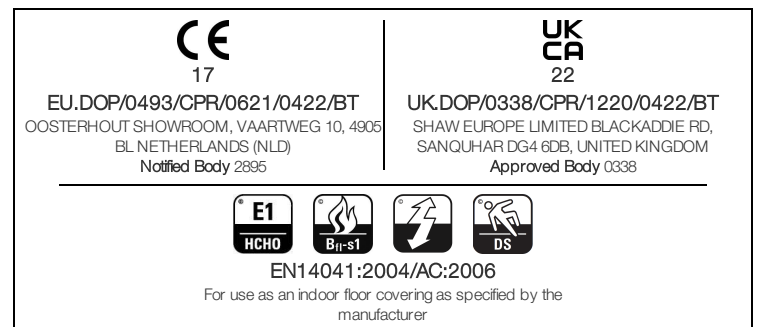
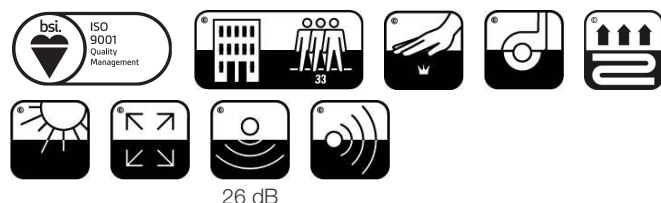
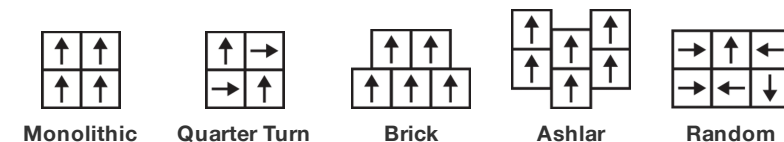


### Données

Points	<b>ISO 1763</b>	<b>140,000/m²   35.4 per 10 cm</b>
Propension Electrostatique	<b>ISO 6356</b>	<b>≤ 2.0 kv (Stroll Test)</b>
Classification d'Utilisation	<b>EN 1307</b>	<b>33 Commercial Heavy</b>
Classification Luxe	<b>EN 1307</b>	<b>LC1</b>
Stabilité Dimensionnelle	<b>EN 986</b>	<b>≤ 0.2%</b>
Isolation Acoustique	<b>ISO 10140</b>	<b>26 Db</b>
Classification d'Absorption Sonore	<b>ISO 354/11654</b>	<b>0.15 Aw   Class E</b>
Résistance Thermique m² K/w	<b>ISO 8302</b>	<b>0.062 M² K/W Tog 0.62</b>
Dry Slip Resistance	<b>ISO 13893</b>	<b>Pass/No Pulled Loops</b>
Résistance De La Couleur À La Lumière	<b>ISO 105-B02</b>	<b>&gt;6</b>
Inflammabilité	<b>EN 13501-1</b>	<b>Bfl-S1 (Adhered Testing)</b>
Chaise À Roulette	<b>EN 985</b>	<b>≥2.4 Continuous USE</b>

**Limitée Commerciale De 15 Ans** subject to installation in full accordance with manufacturer's instructions and a regular effective cleaning and maintenance programme.

### Méthodes d'Installation Conseillées



Corporate Headquarters +1 800 257 7429 | +1 706 532 7984 | Atlanta +1 404 853 7429 | Bengaluru +91 80 6773 0202 | Beijing +86 10 6568 588 | Chicago +1 312 467 1331 | Dubai +971 4 584 6956 | Hong Kong +852 2623 0371 | Latin America (Miami) +1 305 827 5912 | London +44 207 961 4120 | Los Angeles +1 800 233 1614 | Melbourne +61 3 9939 8543 | Mexico City +55 5010 7600 | Mumbai +91 22 6284 5050 | Nantong +86 400 800 7429 | New York +1 212 953 7429 | Paris +33 (0) 1 81 22 44 39 | San Francisco +1 415 955 1920 | Santiago +562 2431 5000 x 550 | São Paulo +55 11 3071 1702 | Shanghai +86 21 3338 4000 | Singapore +65 6733 1811 | Sydney +1 800 556 302

Coordination Des Produits

Carpet Tile: **Dream Comfortworx® Tile, Belong Comfortworx® Tile, Together Comfortworx® Tile, Illusion Comfortworx® Tile, Belong Taskworx® Hexagon Tile, Together Hexagon Taskworx® Tile, Dream Taskworx® Tile, Belong Taskworx® Tile, Together Taskworx® Tile, Illusion Taskworx® Tile**

Attributs + Certifications

Certifications Below Apply Exclusively To The Carpet Tile Rug Itself And Not The Lokworx Tabs Adhesive

Declaration of Performance	EU.DOP/0493/CPR/0621/0422/BT
Certification Cradle to Cradle™ (C2C)	Bronze Level (Version 3.1)
Déclaration environnementale de produit (EPD)	Certifié Par Un Organisme Tiers Conformément Aux Normes ISO14044, ISO 14025 & EN15804
Building Research Establishment (BRE)	A+ Health/A+ Retail 0.301/0.399 Ecopoints
garantie environnementale	Take Back Policy Offered For All Taskworx Products
ISO 9001	Certifié
pays d'origine	United Kingdom
BREEAM Contribution Credit	Certificate of Approval Schools/Offices/Health/Industrial Shed Retail

Well V2 Contribution Credit

X08 Hazardous Material Reduction Part 1: Limit Hazardous Materials Optimization	C2C Bronze Level (Version 3.1)
X10 Volatile Compound Reduction Part 1 (A): Manage Volatile Organic Compounds (VOCs) Optimization	C2C Bronze Level (Version 3.1)
X10 Volatile Compound Reduction Part 2: Manage Semi-Volatile Organic Compounds (SVOCs) Optimization	C2C Bronze Level (Version 3.1)
X11 Long Term Emissions Control Part 2: Flooring Optimization	M1> Emissions Class For Building Material
X13 Enhanced Material Precaution Part 1: Select Optimized Materials Optimization	C2C Bronze Level (Version 3.1)
X14 Material Transparency Part 1: Promote Ingredient Disclosure Optimization	C2C Bronze Level (Version 3.1)

Contribution À La Certification Leed

MR Credit: Building Product Disclosure and Optimisation Environmental Product Declarations - Option 1: Environmental Product Declaration (EPD)	3rd Party Certified in Accordance with ISO14044, ISO14025 & EN15804
MR Credit: Building Product Disclosure and Optimisation Material Ingredients - Option 1: Material Ingredient Reporting	C2C Bronze Level (Version 3.1)
MR Credit: Building Product Disclosure and Optimisation Material Ingredients - Option 2: Material Ingredient Optimization	C2C Bronze Level (Version 3.1)
"Crédit EQ : matériaux faibles émissions Option 1 : calculs par catégorie de produit"	Certified

Air Quality

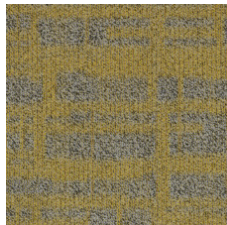
Indoor Air Comfort Gold	Certified
M1	Certified

## Memberships

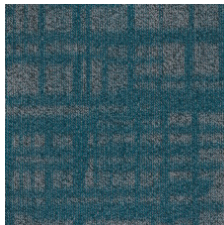
WGBC Framework  
UKGBC  
Emirates Green Building Council  
Chemsec

WGBC Framework  
UKGBC  
Emirates Green Building Council  
Chemsec

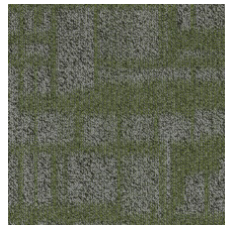
## Indice De Réflexion Lumineuse



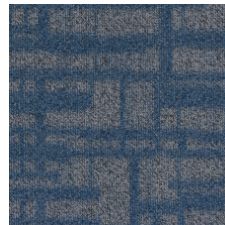
Golden 48211  
LRV 20.9



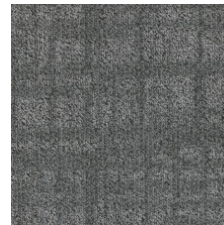
Comfort 48323  
LRV 11.6



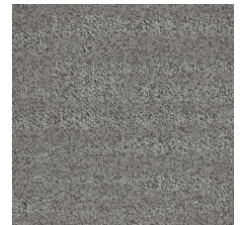
Greenery 48370  
LRV 17.8



Serene 48486  
LRV 15.7



Hearten 48515  
LRV 12



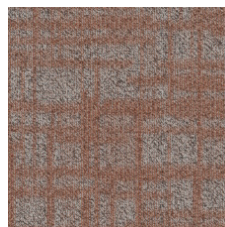
Greige 48516  
LRV 23.2



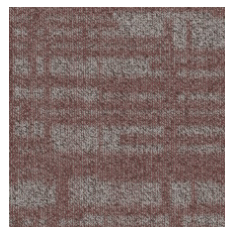
Sense 48535  
LRV 12.4



Rainstorm 48536  
LRV 17.6



Apricot 48675  
LRV 19



Rosewood 48870  
LRV 18.4

## Informations Supplémentaires

\*\*Manufactured in ISO 9001 certified facility. Meets or exceeds all local and national regulations in country of manufacture.

[Installation Guidelines](#)

[Maintenance Guidelines](#)

[Limitée commerciale de 15 ans](#)

Specifications are subject to nominal manufacturing variance. Material supply and/or manufacturing processes may necessitate changes without notice.

This product is an exclusive design and may not be duplicated in any manner. Use of this design in the creation of another product design is also strictly prohibited.

Visit [shawcontract.com/testing](http://shawcontract.com/testing) for more information.



Corporate Headquarters +1 800 257 7429 | +1 706 532 7984 | Atlanta +1 404 853 7429 | Bengaluru +91 80 6773 0202 | Beijing +86 10 6568 588 | Chicago +1 312 467 1331 | Dubai +971 4 584 6956 | Hong Kong +852 2623 0371 | Latin America (Miami) +1 305 827 5912 | London +44 207 961 4120 | Los Angeles +1 800 233 1614 | Melbourne +61 3 9939 8543 | Mexico City +55 5010 7600 | Mumbai +91 22 6284 5050 | Nantong +86 400 800 7429 | New York +1 212 953 7429 | Paris +33 (0) 1 81 22 44 39 | San Francisco +1 415 955 1920 | Santiago +562 2431 5000 x 550 | São Paulo +55 11 3071 1702 | Shanghai +86 21 3338 4000 | Singapore +65 6733 1811 | Sydney +1 800 556 302

© 2024 Shaw Industries Group, Inc., a Berkshire Hathaway Company  
May 14, 2024

3 of 3